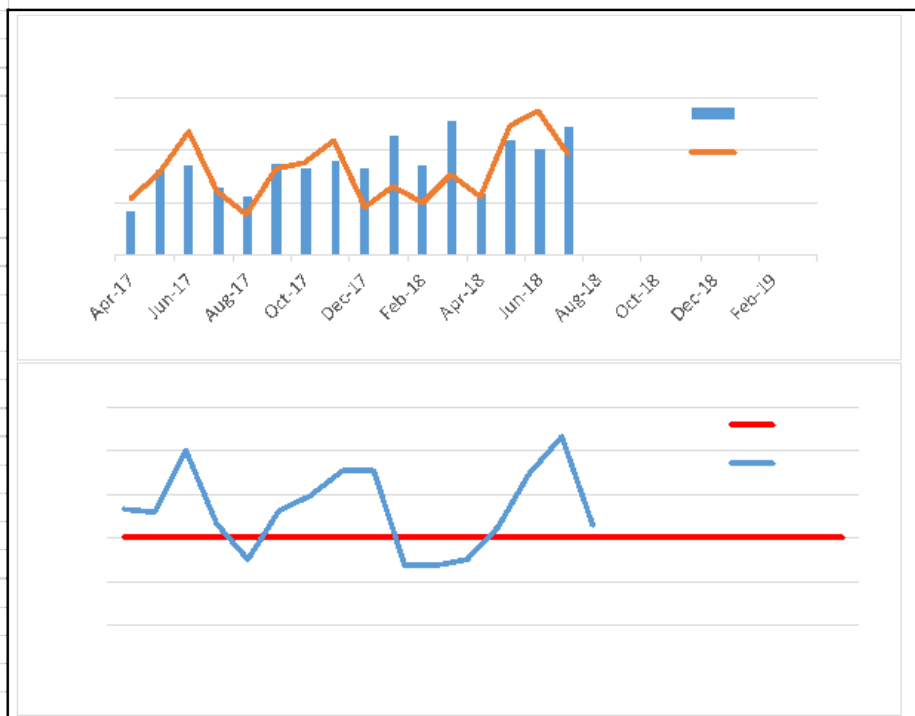


Chart 1

**Number of contacts and % going on to referral** **Jul-18**



Month	Contacts	Refs	% Mnth	% YTD	Target	Var.	RAG
Apr-17	672	190	28.3%	28.3%	25.0%	3.3%	A
May-17	823	229	27.8%	28.0%	25.0%	3.0%	A
Jun-17	842	295	35.0%	30.6%	25.0%	5.6%	A
Jul-17	755	201	26.6%	29.6%	25.0%	4.6%	A
Aug-17	729	163	22.4%	28.2%	25.0%	3.2%	A
Sep-17	850	238	28.0%	28.2%	25.0%	3.2%	A
Oct-17	832	247	29.7%	28.4%	25.0%	3.4%	A
Nov-17	861	281	32.6%	29.0%	25.0%	4.0%	A
Dec-17	830	176	32.6%	31.7%	25.0%	6.7%	A
Jan-18	954	207	21.7%	30.4%	25.0%	5.4%	A
Feb-18	838	182	21.7%	29.5%	25.0%	4.5%	A
Mar-18	1012	227	22.4%	28.8%	25.0%	3.8%	A
Apr-18	737	193	26.2%	26.2%	25.0%	1.2%	A
May-18	939	304	32.4%	29.7%	25.0%	4.7%	A
Jun-18	902	329	36.5%	32.0%	25.0%	7.0%	R
Jul-18	990	260	26.3%	30.4%	25.0%	5.4%	R
Aug-18					25.0%		
Sep-18					25.0%		
Oct-18					25.0%		
Nov-18					25.0%		
Dec-18					25.0%		
Jan-19					25.0%		
Feb-19					25.0%		
Mar-19					25.0%		
<b>YTD:</b>	<b>3,568</b>	<b>1,086</b>	<b>-</b>	<b>30.4%</b>	30.0%	0.4%	<b>R</b>

**CSC Commentary**  
 Performance has remained positive with a small decrease in the number of contacts converted to a referral. Whilst it is not unexpected for some increases and decreases to occur month by month this will need to be kept under scrutiny to ensure progress to date is sustained.

**Definition**  
 The table shows the number of referrals and contacts happening in each given month. The YTD% column shows the year to date number of contacts going on to referrals. The measure is to be taken on a YTD % starting from the current financial year.

**G=<25%**      **A=26%-29%**      **R=30>%**

125

Chart 2

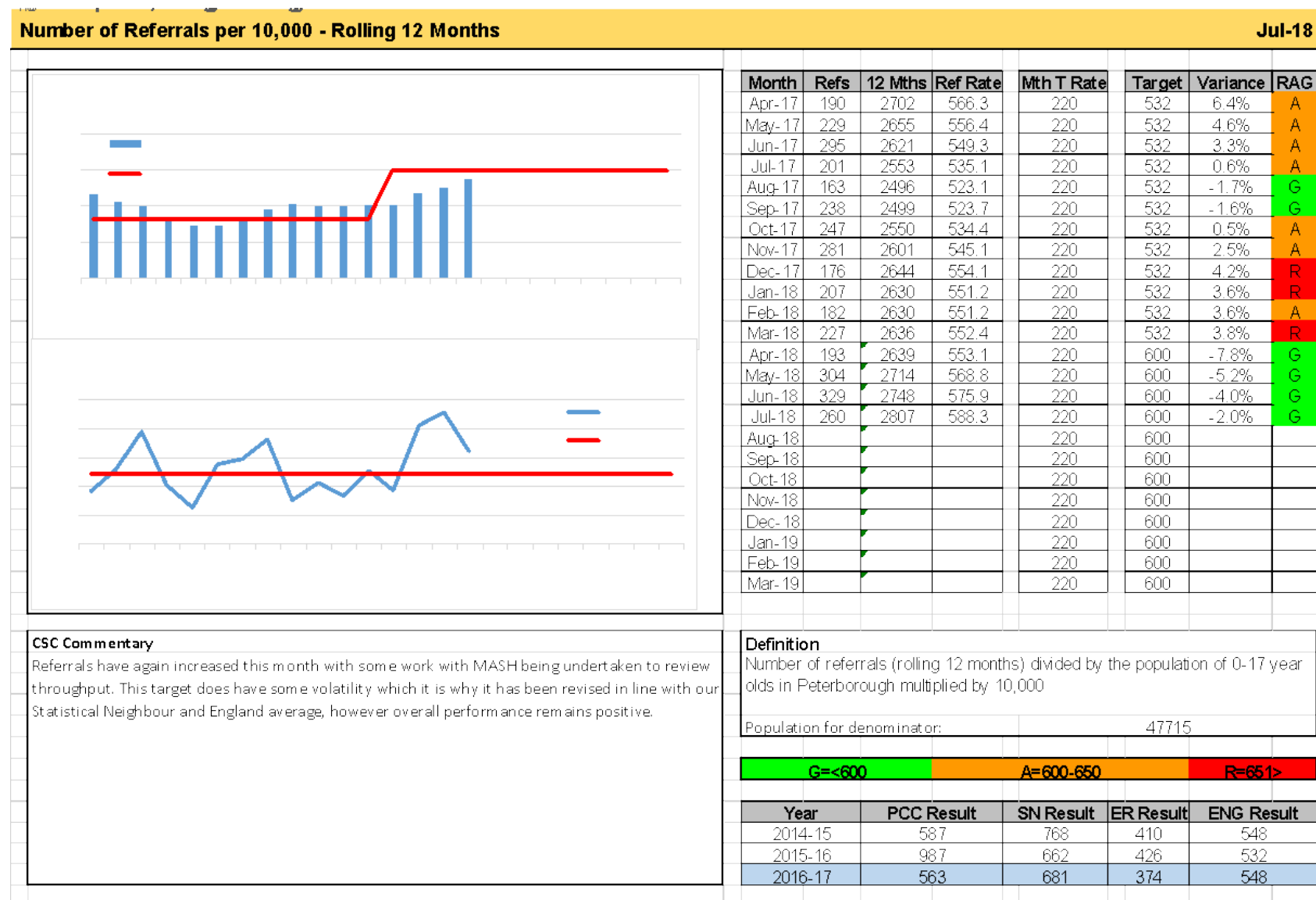
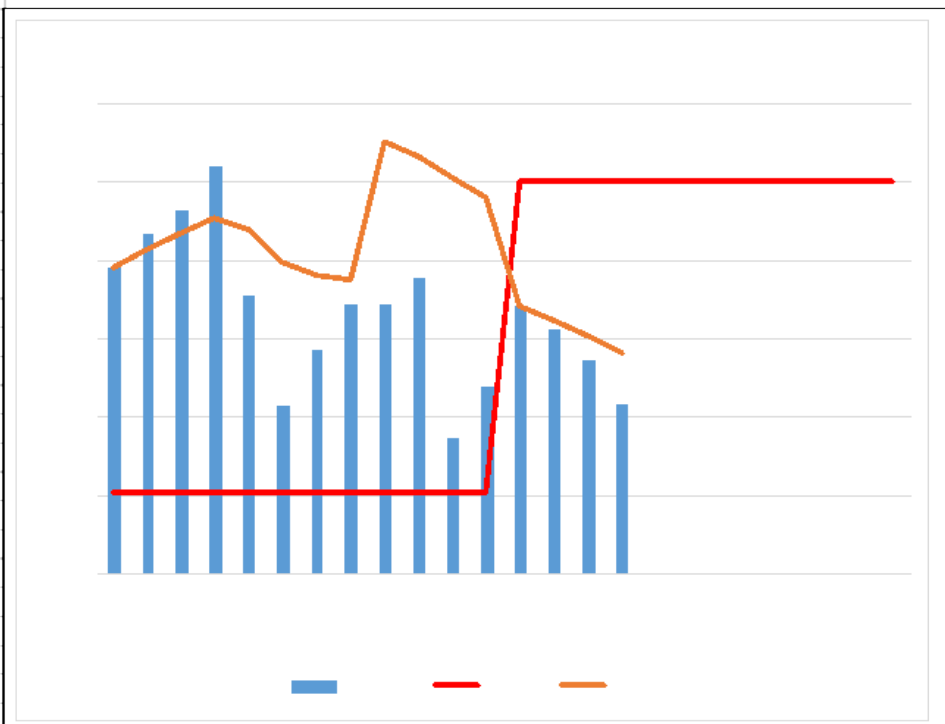


Chart 3

**Referrals progressing to Single Assessment** **Jul-18**



Month	Assess	Refs	% assess	% YTD	Target	Var	RAG
Apr-17	170	190	89.5%	89.5%	75.1%	14%	A
May-17	210	229	91.7%	90.7%	75.1%	17%	A
Jun-17	275	295	93.2%	91.7%	75.1%	18%	A
Jul-17	193	201	96.0%	92.7%	75.1%	21%	A
Aug-17	143	163	87.7%	91.9%	75.1%	13%	A
Sep-17	192	238	80.7%	89.9%	75.1%	6%	A
Oct-17	208	247	84.2%	89.0%	75.1%	9%	A
Nov-17	245	281	87.2%	88.7%	75.1%	12%	A
Dec-17	163	176	87.2%	97.6%	75.1%	12%	A
Jan-18	184	207	88.9%	96.7%	75.1%	14%	A
Feb-18	143	182	78.6%	95.2%	75.1%	3%	A
Mar-18	186	227	81.9%	94.0%	75.1%	7%	A
Apr-18	168	193	87.0%	87.0%	95.0%	-8%	R
May-18	260	304	85.5%	86.1%	95.0%	-9%	R
Jun-18	275	329	83.6%	85.1%	95.0%	-11%	R
Jul-18	210	260	80.8%	84.1%	95.0%	-14%	R
Aug-18					95.0%		
Sep-18					95.0%		
Oct-18					95.0%		
Nov-18					95.0%		
Dec-18					95.0%		
Jan-19					95.0%		
Feb-19					95.0%		
Mar-19					95.0%		

**CSC Commentary**  
 Following the review of 18/19 performance, Peterborough is now in line with our Statistical neighbour and England average, which has meant that the target has increased and we have moved to red which continues. There is work to be undertaken within MASH and with the Assessment teams as to review the referrals from MASH and if they can be signposted to other services where appropriate to improve the conversion rate in the Assessment teams.

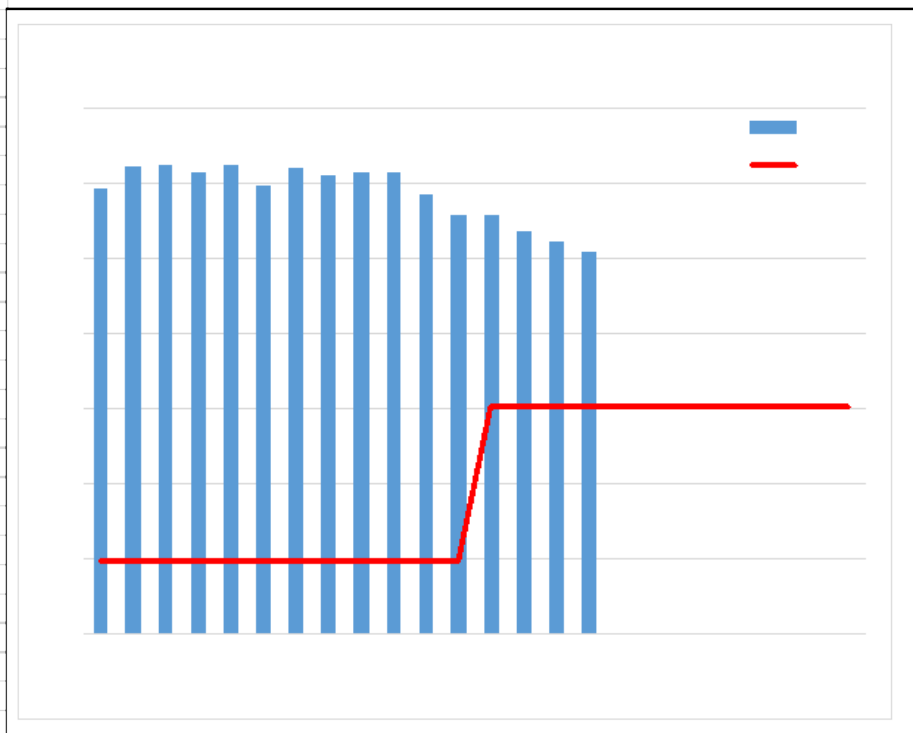
<b>YTD:</b>	<b>913</b>	<b>1,086</b>	<b>-</b>	<b>84.1%</b>	<b>75.1%</b>	<b>9.0</b>	<b>R</b>
-------------	------------	--------------	----------	--------------	--------------	------------	----------

<b>G=95&gt;</b>	<b>A=90-94</b>	<b>R=&lt;89</b>
-----------------	----------------	-----------------

Year	PCC Result	SN Result	ENG Result
2014-15	109%	80%	87%
2015-16	68%	87%	92%
2016-17	87%	99%	94%

Chart 4

**Early Help Assessments per 10,000 - Rolling 12 Months** **Jul-18**



Month	EHAs	12 Mths	Rate	Target	Var.	RAG
Apr-17	121	1887	395.5	147.9	167.4%	
May-17	219	1955	409.7	147.9	177.0%	
Jun-17	206	1963	411.4	147.9	178.2%	
Jul-17	145	1937	406.0	147.9	174.5%	
Aug-17	78	1961	411.0	147.9	177.9%	
Sep-17	90	1897	397.6	147.9	168.8%	
Oct-17	179	1954	409.5	147.9	176.9%	
Nov-17	184	1929	404.3	147.9	173.3%	
Dec-17	150	1941	406.8	147.9	175.0%	
Jan-18	180	1938	406.2	147.9	174.6%	
Feb-18	92	1870	391.9	147.9	165.0%	
Mar-18	157	1801	377.4	147.9	155.2%	
Apr-18	124	1804	378.1	250	51.2%	G
May-18	167	1752	367.2	250	46.9%	G
Jun-18	170	1716	359.6	250	43.9%	G
Jul-18	116	1687	353.6	250	41.4%	G
Aug-18				250		
Sep-18				250		
Oct-18				250		
Nov-18				250		
Dec-18				250		
Jan-19				250		
Feb-19				250		
Mar-19				250		

**CSC Commentary**

The number of Early Help Assessments initiated in June 2018 is consistent with May 2018 which is as expected. There is continued monitoring of the EHAs as they come through the Early Help gateway to ensure they are appropriate and require a multi-agency response.

**Definition**

The rate is the number of new EHAs recorded in the previous 12 months divided by the population of 0-17 year olds in Peterborough multiplied by 10,000. The number of EHAs is taken from the local EHA tracker database and is not externally valid.

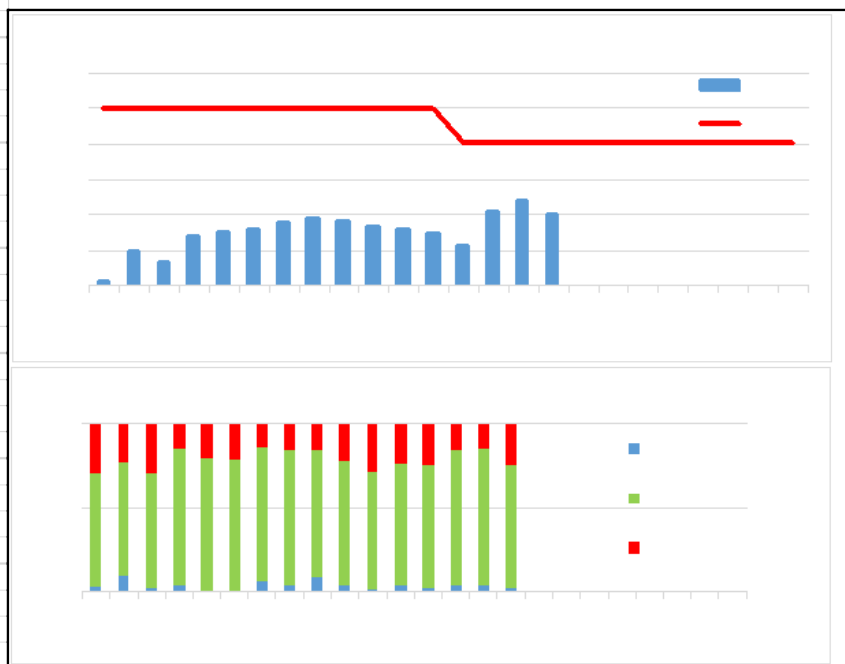
Population for denominator: 47715

**G = <250>**      **A = 147-249**      **R = <146**

Year	PCC Result	ER Result	ENG Result
2012/13	-	-	-
2013/14	-	-	-
2014/15	234.6	131.9	-

Chart 5

**Single Assessment Timescales (within 45 working days) Jul-18**



Month	SA 45	SA >45	SA 1 day	SA All	% Mrth	% YTD	Target	RAG
Apr-17	118	49	5	167	70.7%	70.7%	95.0%	A
May-17	197	57	23	254	77.6%	74.8%	95.0%	R
Jun-17	180	75	5	255	70.6%	73.2%	95.0%	R
Jul-17	269	47	14	316	85.1%	77.0%	95.0%	A
Aug-17	246	64	1	310	79.4%	77.6%	95.0%	R
Sep-17	193	51	0	244	79.1%	77.8%	95.0%	R
Oct-17	198	31	15	229	86.5%	78.9%	95.0%	A
Nov-17	158	30	8	188	84.0%	79.4%	95.0%	A
Dec-17	157	28	16	185	76.2%	79.1%	95.0%	R
Jan-18	248	71	13	319	73.7%	78.4%	95.0%	R
Feb-18	151	60	3	211	70.1%	77.8%	95.0%	R
Mar-18	181	56	8	237	73.0%	77.4%	95.0%	R
Apr-18	185	60	4	245	75.5%	75.5%	90.0%	R
May-18	279	53	11	332	84.0%	80.4%	90.0%	A
Jun-18	225	39	9	264	85.2%	81.9%	90.0%	A
Jul-18	256	86	7	342	74.9%	79.9%	90.0%	A
Aug-18							90.0%	
Sep-18							90.0%	
Oct-18							90.0%	
Nov-18							90.0%	
Dec-18							90.0%	
Jan-19							90.0%	
Feb-19							90.0%	
Mar-19							90.0%	

**CSC Commentary**  
 Completion of Child & Family Assessments has shown some improvement in performance, with the number of assessments being completed under the 45 day target remaining around 80% as the YTD figure. This target remains a challenge with staff pressures and recent increases in referrals to the Assessment teams from MASH; however each manager continues to work with staff using a 20 day management review of the assessment to improve timeliness.

YTD:	945	238	31	1183	--	79.9%	95.0%	A
------	-----	-----	----	------	----	-------	-------	---

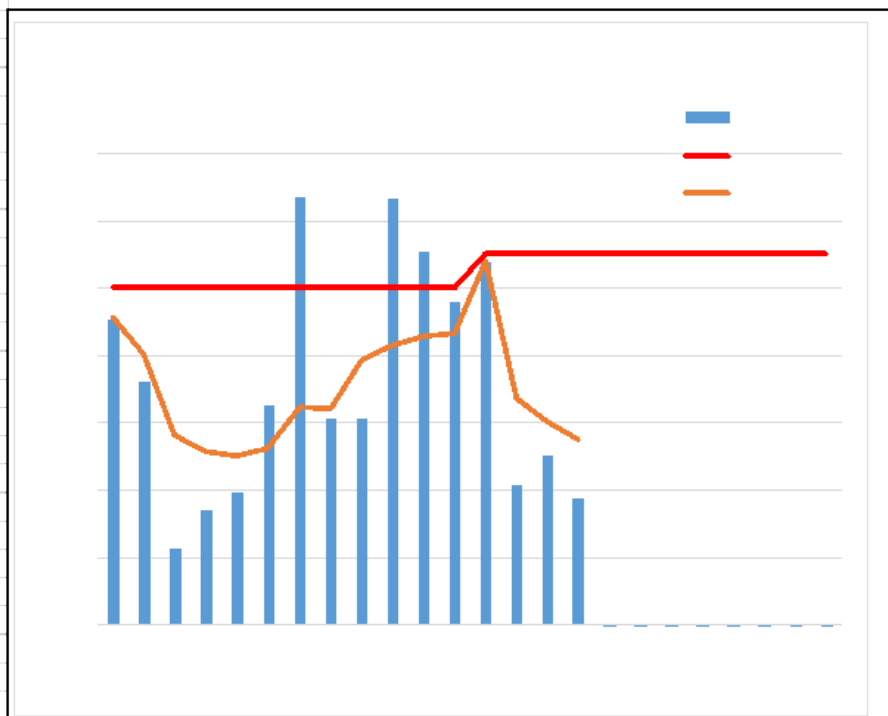
**Definition**  
 The number of single assessments YTD completed within 45 working days from the start of the referral start, as a percentage of the number of single assessments completed YTD.

G=90>	A=79-89	R=<78
-------	---------	-------

Year	PCC R	SN Result	ER Result	ENG Result
2014-15	90%	83%		81%
2015-16	91%	85%		83%
2016-17	82%	84%		83%

Chart 6

**Re-referrals within 12 months** **Jul-18**



Month	Re-Refs	Refs	% Mnth	% YTD	Target	Var	RAG
Apr-17	40	190	21.1%	21.1%	22.0%	4.3	
May-17	44	229	19.2%	20.0%	22.0%	-2.0	
Jun-17	42	295	14.2%	17.6%	22.0%	-4.4	
Jul-17	31	201	15.4%	17.2%	22.0%	-4.8	
Aug-17	26	163	16.0%	17.0%	22.0%	-5.0	
Sep-17	44	238	18.5%	17.2%	22.0%	-4.8	
Oct-17	61	247	24.7%	18.4%	22.0%	-3.6	
Nov-17	51	281	18.1%	18.4%	22.0%	-3.6	
Dec-17	27	176	18.1%	19.8%	22.0%	-2.2	
Jan-18	51	207	24.6%	20.3%	22.0%	-1.7	
Feb-18	42	182	23.1%	20.6%	22.0%	-1.4	
Mar-18	49	227	21.6%	20.7%	22.0%	-1.3	
Apr-18	44	193	22.8%	22.8%	23.0%	-0.2	G
May-18	49	304	16.1%	18.7%	23.0%	-4.3	G
Jun-18	56	329	17.0%	18.0%	23.0%	-5.0	G
Jul-18	41	260	15.8%	17.5%	23.0%	-5.5	G
Aug-18					23.0%		
Sep-18					23.0%		
Oct-18					23.0%		
Nov-18					23.0%		
Dec-18					23.0%		
Jan-19					23.0%		
Feb-19					23.0%		
Mar-19					23.0%		
<b>YTD:</b>	<b>190</b>	<b>1,086</b>	<b>--</b>	<b>17.5%</b>	<b>22.0%</b>	<b>-4.5</b>	<b>G</b>

**CSC Commentary**  
 This has remained at green as with the previous months with a review of the performance target in line with our Statistical Neighbour reflecting that we are closing the right cases and that they are not being referred back to Childrens Services

**Definition**  
 The percentage of referrals where a previous referral has occurred within the last 12 months. If a child has more than one re-referral in the year, each one will be counted.

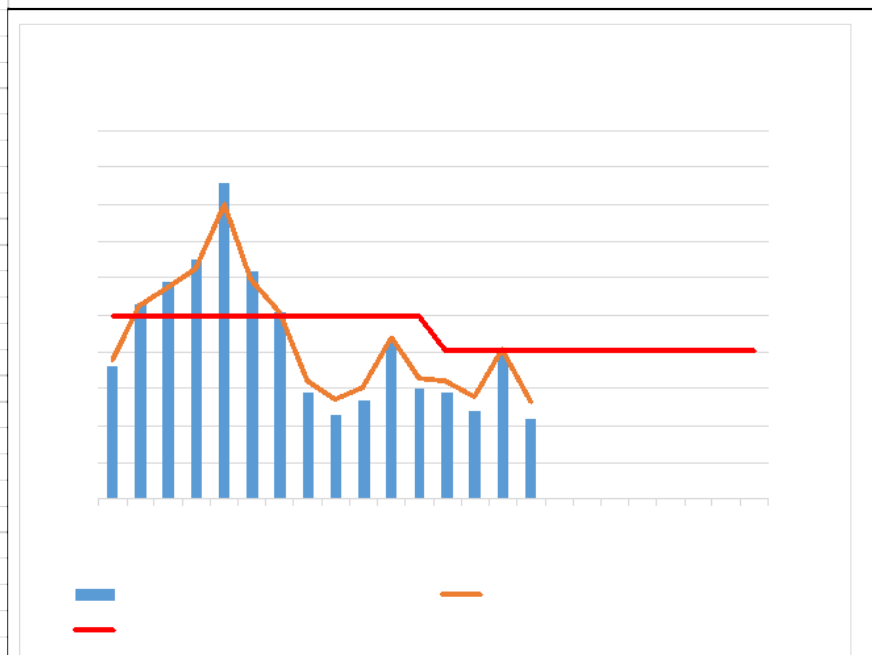
<b>G=&lt;23%</b>	<b>A=24-29%</b>	<b>R=30&gt;</b>
------------------	-----------------	-----------------

Year	PCC Result	SN Result	ENG Result
2014-15	18%	26%	24%
2015-16	29%	21%	22%
2016-17	27%	22%	21%

130

Chart 7

**Number of Children with a Child Protection Plan per 10,000** **Jul-18**



Month	CP	Pop.	Rate	Target	Variance	RAG
Apr-17	236	47715	49.5	52.4	-5.6%	G
May-17	253	47715	53.0	52.4	1.2%	A
Jun-17	259	47715	54.3	52.4	3.6%	A
Jul-17	265	47715	55.5	52.4	6.0%	R
Aug-17	286	47715	59.9	52.4	14.4%	R
Sep-17	262	47715	54.9	52.4	4.8%	R
Oct-17	251	47715	52.6	52.4	0.4%	A
Nov-17	229	47715	48.0	52.4	-8.4%	G
Dec-17	223	47715	46.7	52.4	-10.8%	G
Jan-18	227	47715	47.6	52.4	-9.2%	G
Feb-18	243	47715	50.9	52.4	-2.8%	G
Mar-18	230	47715	48.2	52.4	-8.0%	G
Apr-18	229	47715	48.0	50.0	-4.0%	G
May-18	224	47715	46.9	50.0	-6.1%	G
Jun-18	239	47715	50.1	50.0	0.2%	G
Jul-18	222	47715	46.5	50.0	-6.9%	G
Aug-18		47715		50.0		
Sep-18		47715		50.0		
Oct-18		47715		50.0		
Nov-18		47715		50.0		
Dec-18		47715		50.0		
Jan-19		47715		50.0		
Feb-19		47715		50.0		
Mar-19		47715		50.0		

**CSC Commentary**  
 This month has seen an increase, however there will always be some volatility in the number of children being made subject to a CP Plan, with some large siblings groups affecting numbers. We aim to reduce CP numbers to CIN where safe and appropriate continues and are likely to see further reductions in the following months under Family Safeguarding, however this month's increase remains within the area of good performance against Other Local Authorities.

**Definition**  
 Number of children with a current child protection plan divided by the population of 0-17 year olds in Peterborough multiplied by 10,000. The number of children is taken as a snapshot count at the end of each month.  
 Population for denominator: 47715

G <50	A 51-52	R >53
-------	---------	-------

Year	PCC Result	SN Result	ENG Result
2014-15	50	56	43
2015-16	54	57	43
2016-17	51	55	43

Chart 8

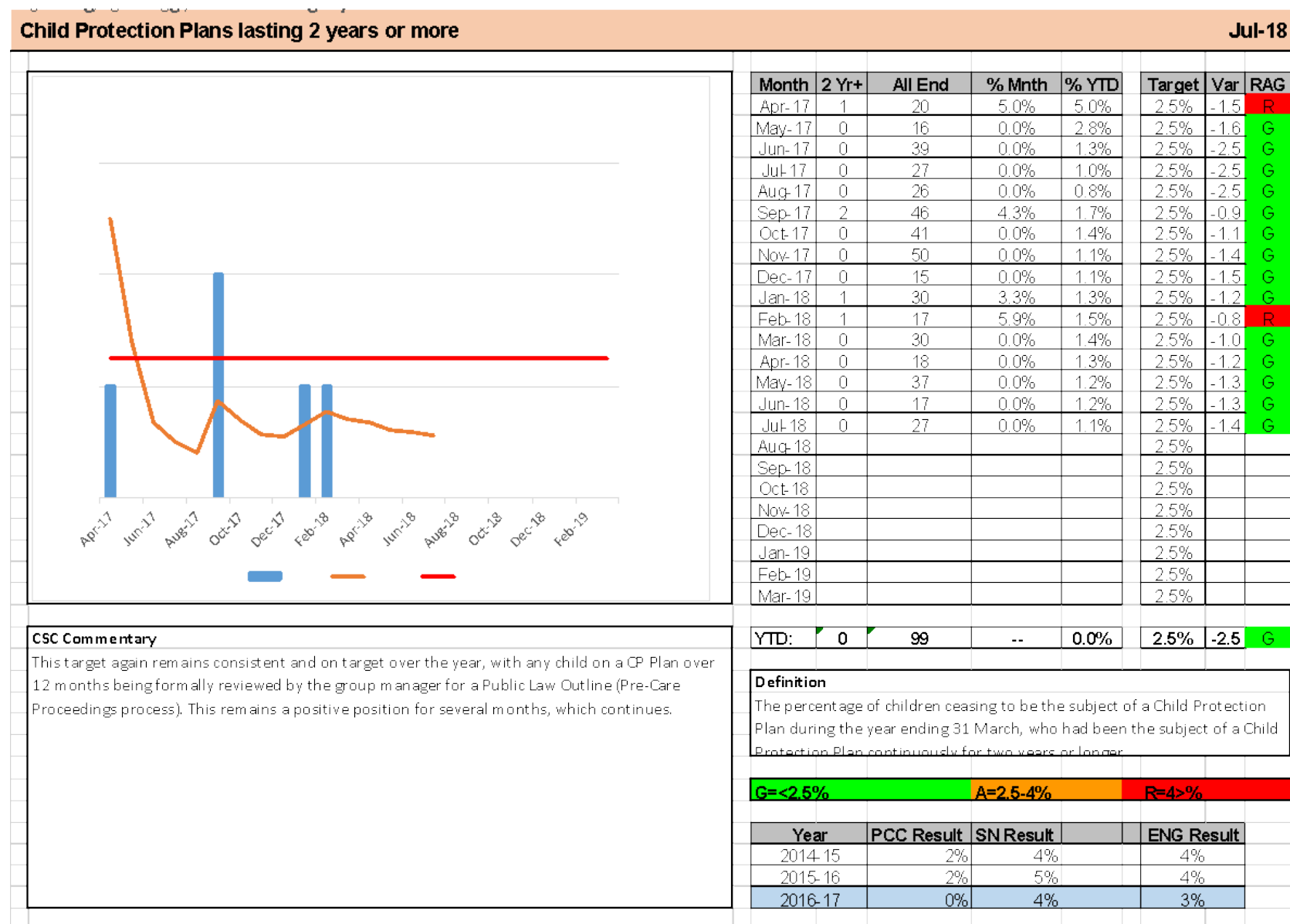
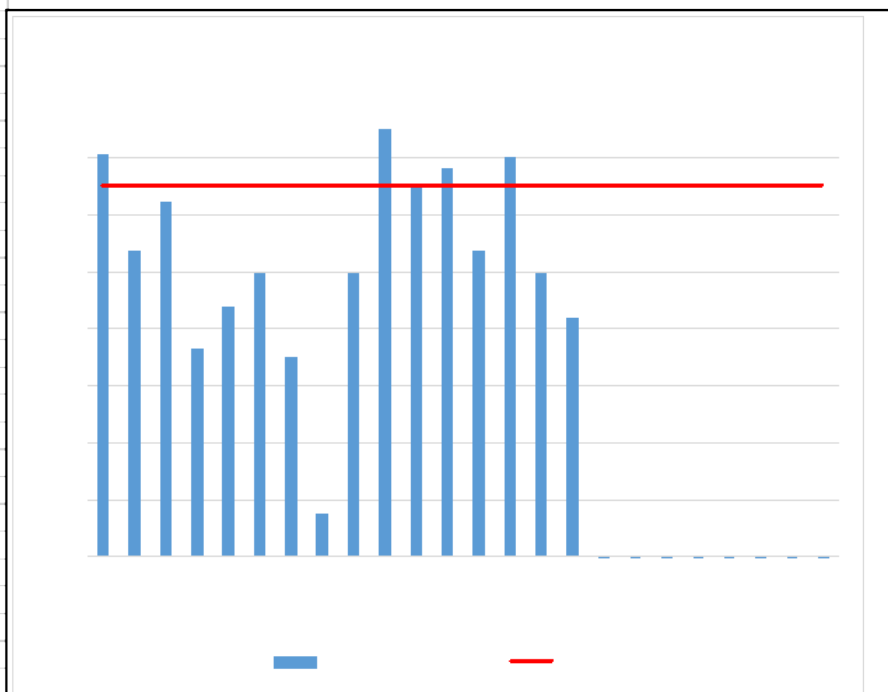




Chart 9

**Child protection statutory visits in time** **Jul-18**



Month	Num.	Denom.	% of CP	Target	Variance	RAG
Apr-17	220	222	99.1%	98.0%	1.1	G
May-17	222	232	95.7%	98.0%	-2.3	A
Jun-17	228	234	97.4%	98.0%	-0.6	A
Jul-17	215	233	92.3%	98.0%	-5.7	A
Aug-17	240	256	93.8%	98.0%	-4.3	A
Sep-17	244	257	94.9%	98.0%	-3.1	A
Oct-17	231	251	92.0%	98.0%	-6.0	A
Nov-17	198	229	86.5%	98.0%	-97.1	R
Dec-17	207	218	95.0%	98.0%	-97.1	A
Jan-18	215	215	100.0%	98.0%	-97.0	G
Feb-18	200	204	98.0%	98.0%	-97.0	G
Mar-18	215	218	98.6%	98.0%	-97.0	G
Apr-18	201	210	95.7%	98.0%	-2.3	A
May-18	194	196	99.0%	98.0%	1.0	G
Jun-18	206	217	94.9%	98.0%	-3.1	A
Jul-18	198	212	93.4%	98.0%	-4.6	A
Aug-18				98.0%		
Sep-18				98.0%		
Oct-18				98.0%		
Nov-18				98.0%		
Dec-18				98.0%		
Jan-19				98.0%		
Feb-19				98.0%		
Mar-19				98.0%		

**CSC Commentary**  
 The number of CP visits has had an improving trajectory, but with performance last couple of month dipping to amber. The monitoring of visiting is working so as to see children and progress the Child Protection Plan and reduce risks. Work with managers to bring this back to green will be undertaken.

**Definition**  
 Of all children subject to a child protection plan for more than 4 weeks, the number and percentage of visits that were done within the 4 week deadline.  
 This is snapshot data taken at the month end.

G=>98	A=90-97	R=<89
-------	---------	-------

Chart 10

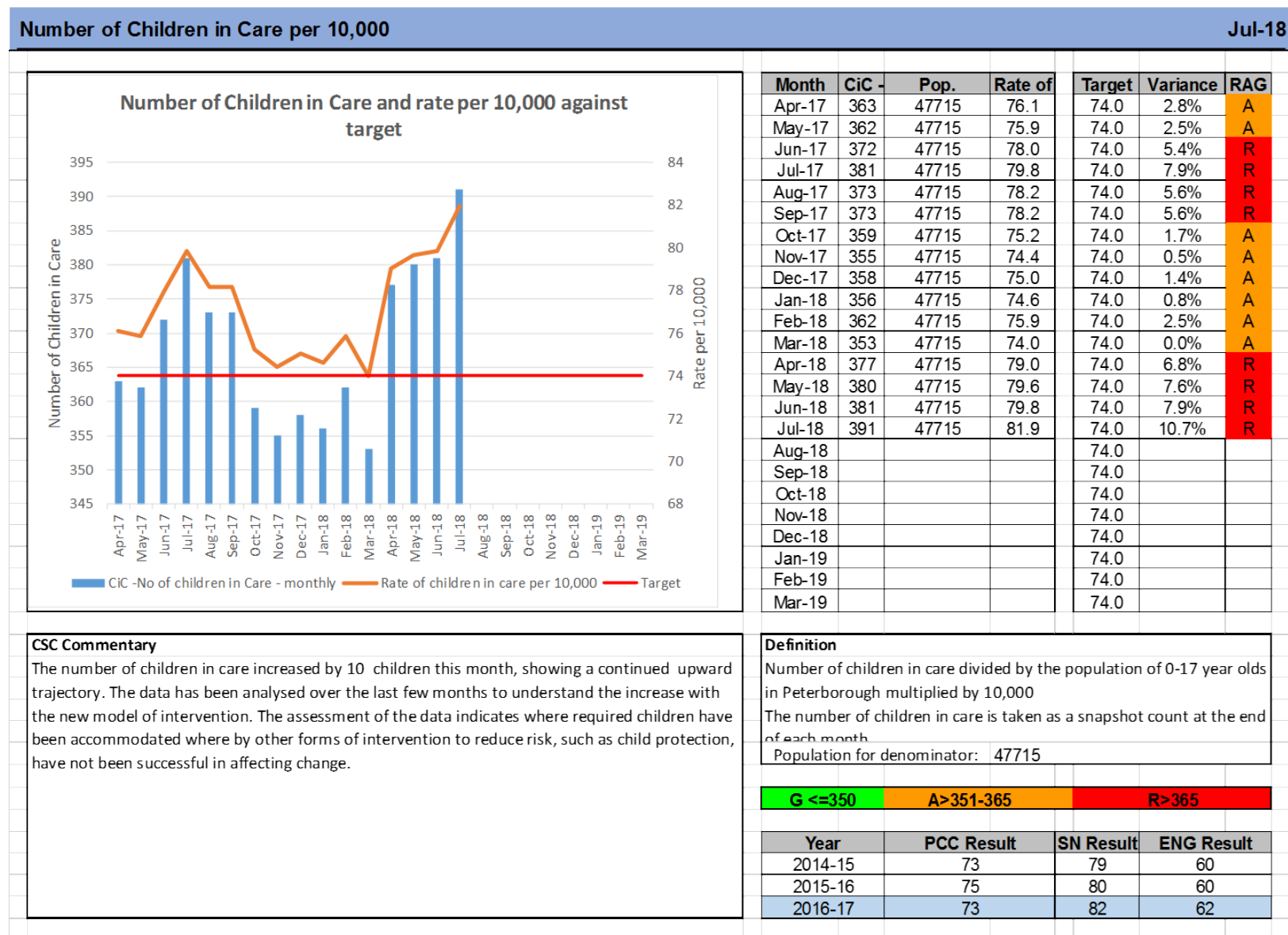
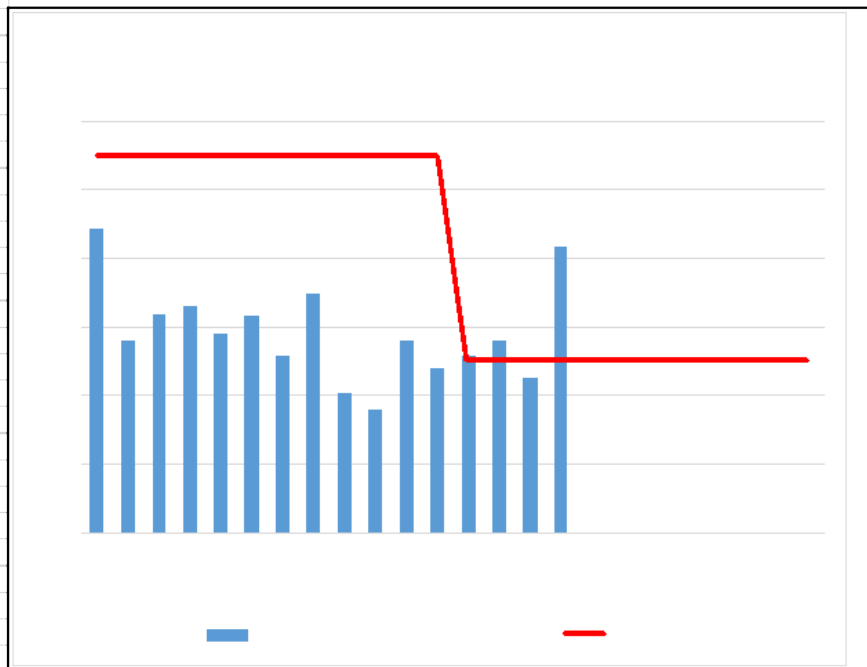


Chart 11

**Placement Stability: 3 or more placements during previous 12 months for CIC** Jul-18



Month	Num.	Denom.	% of CLA	Target	Variance	RAG
Apr-17	27	363	7.4%	8.5%	-1.1	G
May-17	21	362	5.8%	8.5%	-2.7	G
Jun-17	23	372	6.2%	8.5%	-2.3	G
Jul-17	24	381	6.3%	8.5%	-2.2	G
Aug-17	22	373	5.9%	8.5%	-2.6	G
Sep-17	23	373	6.2%	8.5%	-2.3	G
Oct-17	20	359	5.6%	8.5%	-2.9	G
Nov-17	23	355	6.5%	8.5%	-2.0	G
Dec-17	18	358	5.0%	8.5%	-3.5	G
Jan-18	17	356	4.8%	8.5%	-3.7	G
Feb-18	21	362	5.8%	8.5%	-2.7	G
Mar-18	19	353	5.4%	8.5%	-3.1	G
Apr-18	21	377	5.6%	5.5%	0.1	A
May-18	22	380	5.8%	5.5%	0.3	A
Jun-18	20	381	5.2%	5.5%	-0.3	G
Jul-18	28	391	7.2%	5.5%	1.7	A
Aug-18				5.5%		
Sep-18				5.5%		
Oct-18				5.5%		
Nov-18				5.5%		
Dec-18				5.5%		
Jan-19				5.5%		
Feb-19				5.5%		
Mar-19				5.5%		

**CSC Commentary**  
 This target has generally demonstrated good performance but there has been a dip in the last month, which we will need to ensure does not continue

**Definition**  
 The percentage of children in care at any given time with three or more placements during the last 12 months.  
 Population for denominator: 46600

**G <= 5.5**      **A > 5.6-9**      **R > 10**

Year	PCC Result	SN Result	ENG Result
2013-14	9%	11%	11%
2014-15	6%	10%	10%
2015-16	9%	10%	10%

Chart 12

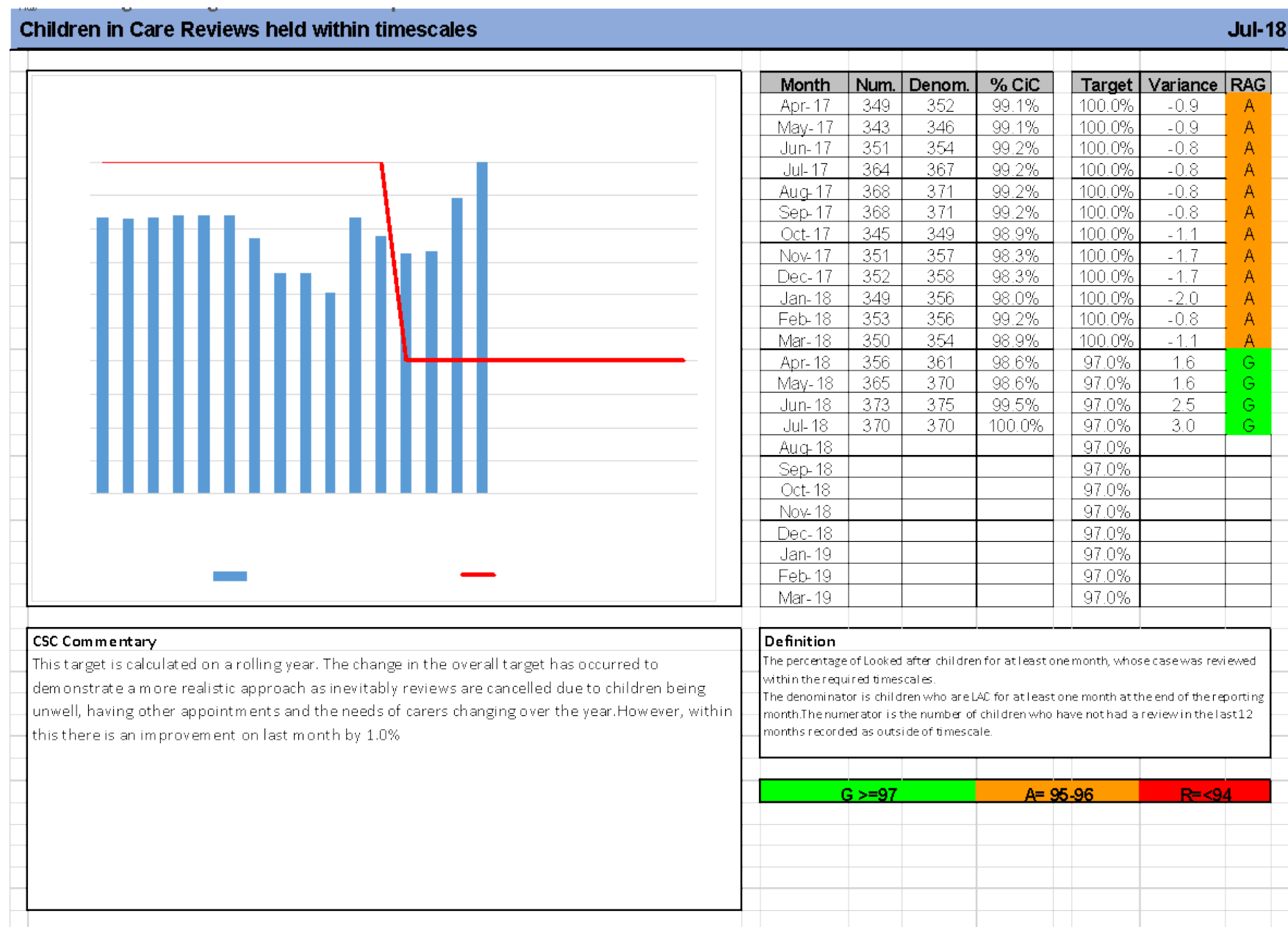
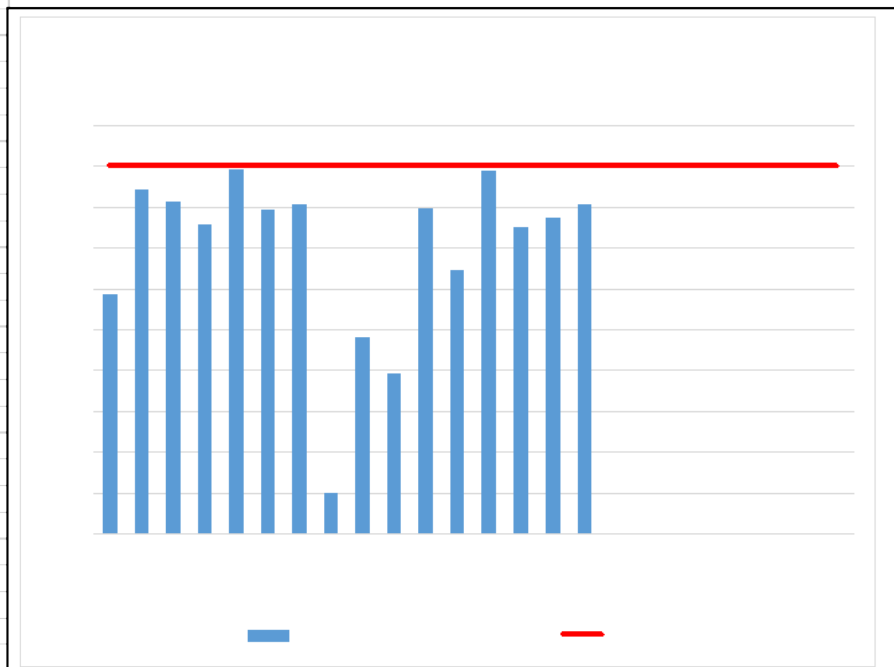


Chart 13

**Children in care statutory visits in time** **Jul-18**



Month	Num.	Denom.	% of	Target	Variance	RAG
Apr-17	320	349	91.7%	98.0%	-6.3	A
May-17	334	345	96.8%	98.0%	-1.2	A
Jun-17	334	347	96.3%	98.0%	-1.7	A
Jul-17	332	349	95.1%	98.0%	-2.9	A
Aug-17	357	365	97.8%	98.0%	-0.2	A
Sep-17	347	362	95.9%	98.0%	-2.1	A
Oct-17	345	359	96.1%	98.0%	-1.9	A
Nov-17	282	344	82.0%	98.0%	-16.0	R
Dec-17	309	345	89.6%	98.0%	-8.4	R
Jan-18	303	345	87.8%	98.0%	-10.2	R
Feb-18	331	345	95.9%	98.0%	-2.1	A
Mar-18	326	351	92.9%	98.0%	-5.1	A
Apr-18	343	351	97.7%	98.0%	-0.3	A
May-18	341	359	95.0%	98.0%	-3.0	A
Jun-18	354	371	95.4%	98.0%	-2.6	A
Jul-18	348	362	96.1%	98.0%	-1.9	A
Aug-18				98.0%		
Sep-18				98.0%		
Oct-18				98.0%		
Nov-18				98.0%		
Dec-18				98.0%		
Jan-19				98.0%		
Feb-19				98.0%		
Mar-19				98.0%		

**CSC Commentary**

This target remains in Amber for the 5th month in a row. The impact of analysing the data has maintained improvement albeit within the scope of Amber. This takes account of some young people not wanting to see their SW due to other commitments or forgetting to see their SW. It also relates to SWs not always recording stat visits within timescales.

**Definition**

Of all Children in Care that have been looked after for more than 6 weeks, the number and percentage of visits that were completed within the 6 week deadline (or within three months for those Children in Care that have been looked after for more than 12 months and whose placement is deemed to be permanent). This is snapshot data taken at the month end.

<b>G &gt;=98%</b>	<b>A 97%-90%</b>	<b>R &lt;90%</b>
-------------------	------------------	------------------

Chart 14

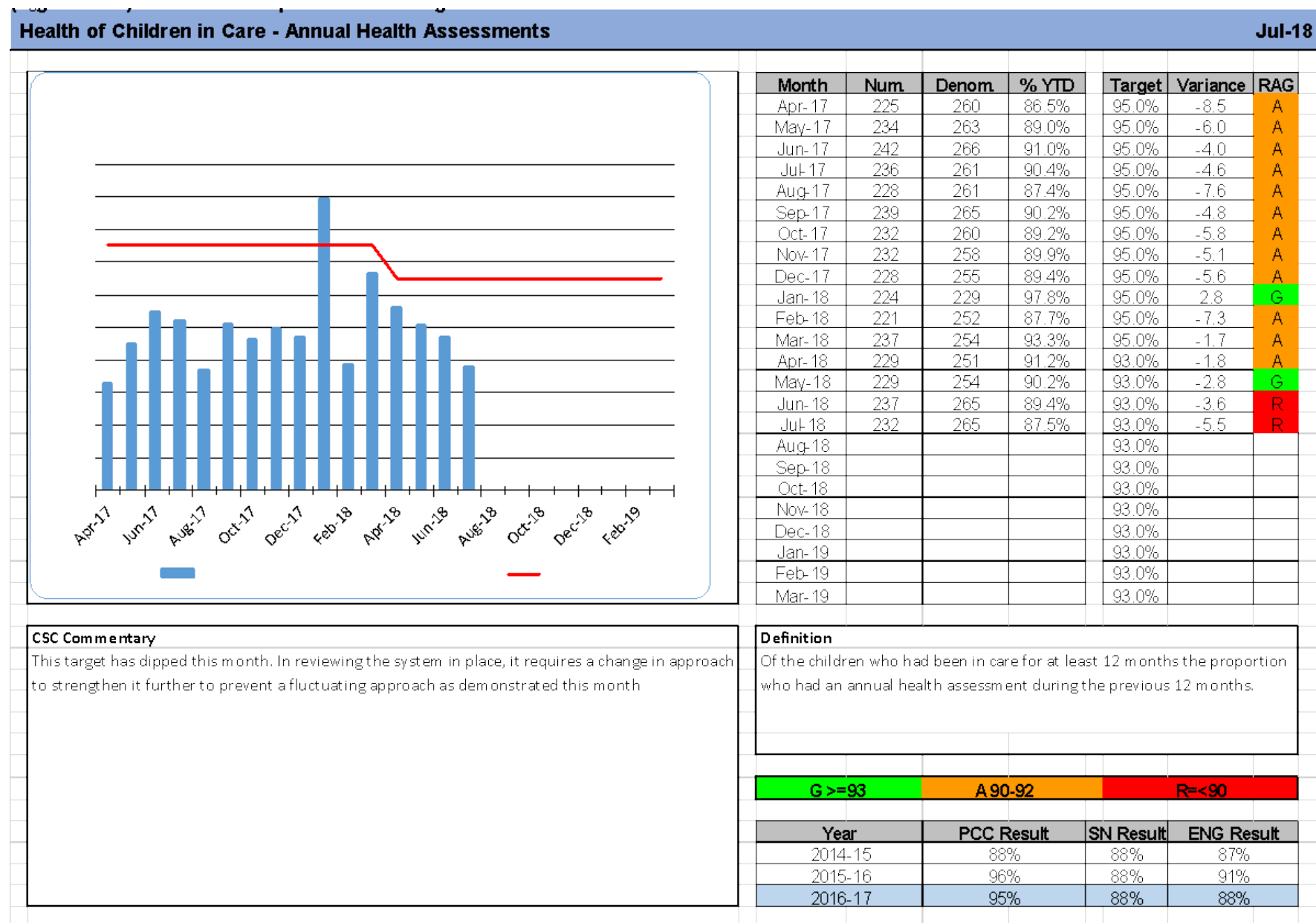
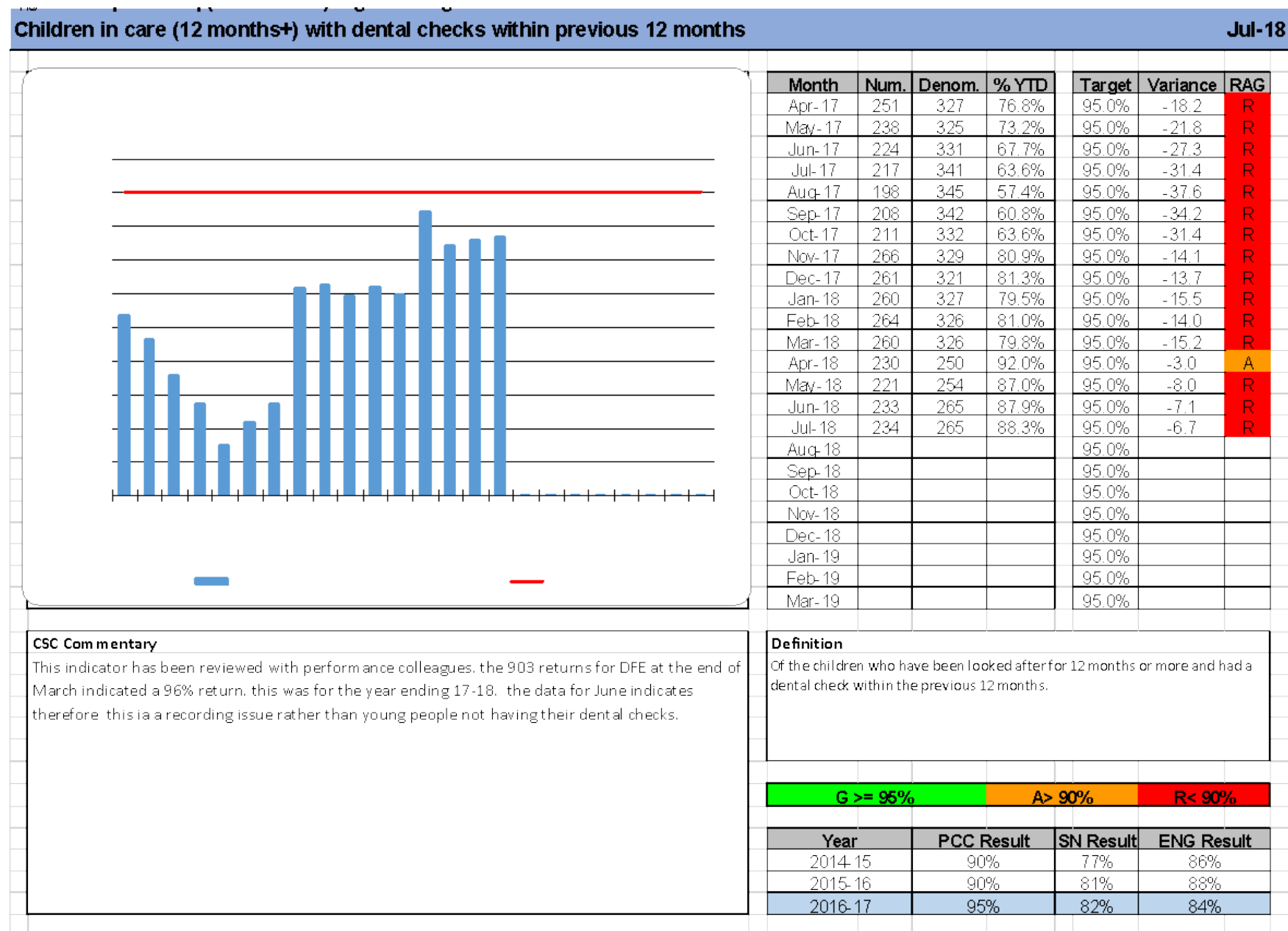


Chart 15

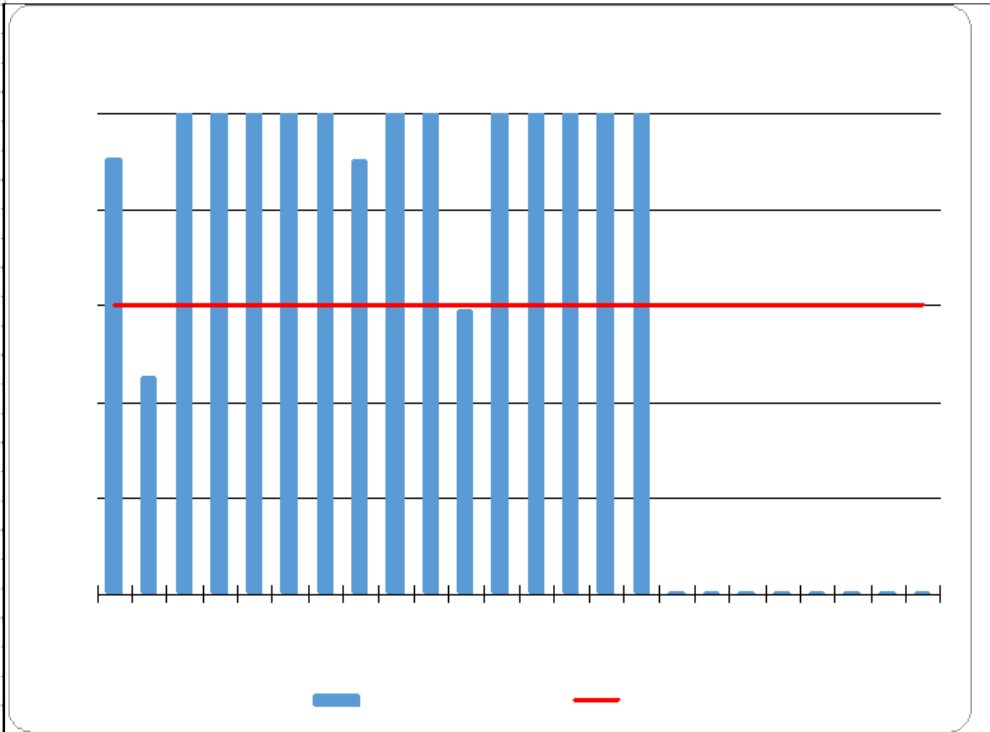


139

Chart 16

Personal Education Plans (PEPs)

Jul-18



Month	Num.	Denom.	% YTD	Target	Variance	RAG
Apr-17	209	210	99.5%	98.0%	1.5	G
May-17	212	218	97.2%	98.0%	-0.8	A
Jun-17	214	214	100.0%	98.0%	2.0	G
Jul-17	225	225	100.0%	98.0%	2.0	G
Aug-17	208	208	100.0%	98.0%	2.0	G
Sep-17	208	208	100.0%	98.0%	2.0	G
Oct-17	200	200	100.0%	98.0%	2.0	G
Nov-17	203	204	99.5%	98.0%	1.5	G
Dec-17	232	232	100.0%	98.0%	2.0	G
Jan-18	232	232	100.0%	98.0%	2.0	G
Feb-18	238	243	97.9%	98.0%	-0.1	A
Mar-18	242	242	100.0%	98.0%	2.0	G
Apr-18	244	244	100.0%	98.0%	2.0	G
May-18	256	256	100.0%	98.0%	2.0	G
Jun-18	261	261	100.0%	98.0%	2.0	G
Jul-18	263	263	100.0%	98.0%	2.0	G
Aug-18				98.0%		
Sep-18				98.0%		
Oct-18				98.0%		
Nov-18				98.0%		
Dec-18				98.0%		
Jan-19				98.0%		
Feb-19				98.0%		
Mar-19				98.0%		

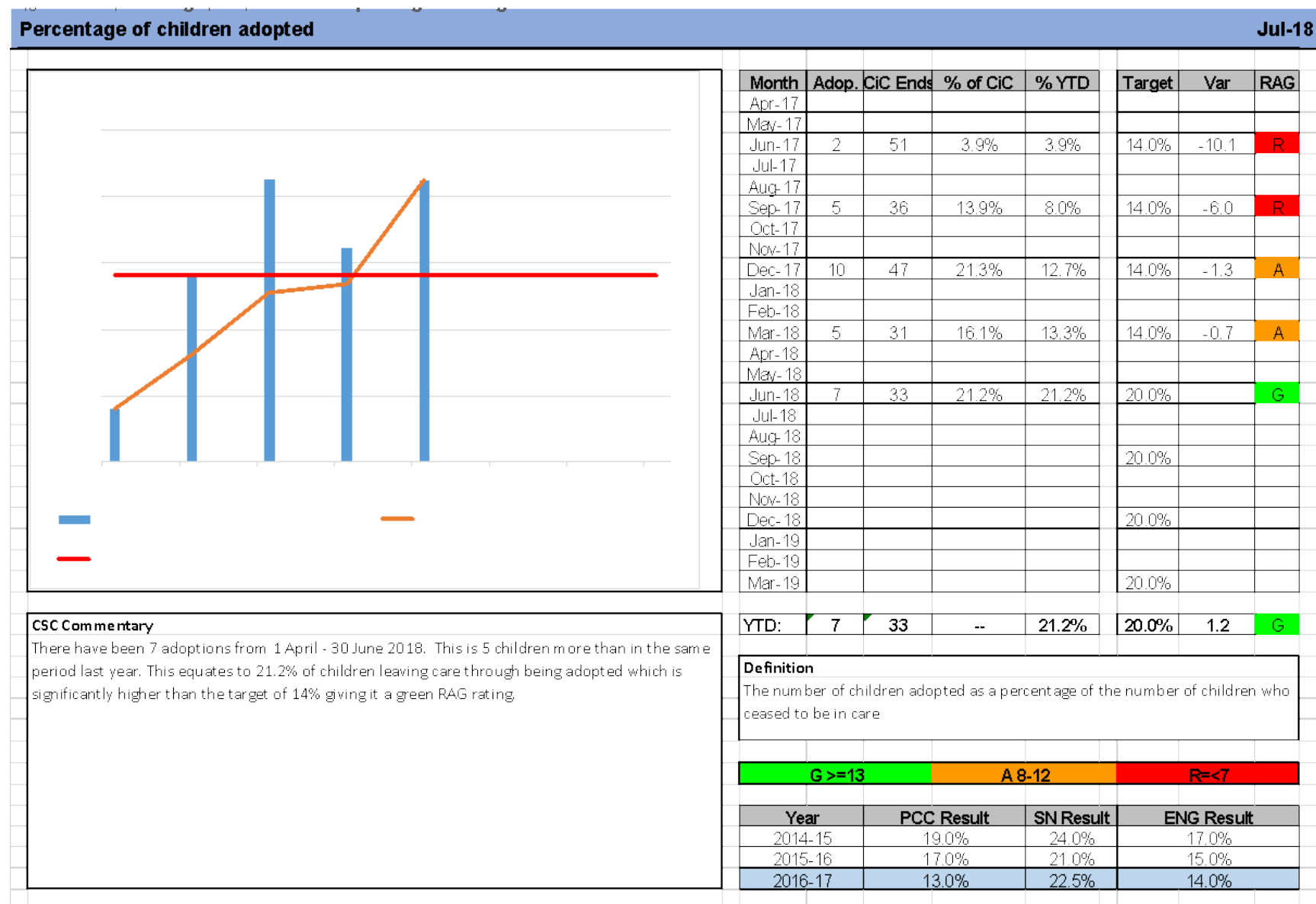
**CSC Commentary**  
 The continued 100% completion of PEPs reflects the ongoing partnership between PVS and social workers.

**Definition**  
 The denominator is the number of children in care who are of school age. The numerator is of those children, the number that have a PEP added to the system. This has been addressed with managers.

**G = >98%**      **A=95%-97%**      **R < 95%**



Chart 17



This page is intentionally left blank